

Sheehan breaks course record; Westfield wins

By GRANT EDWARDS

Cliff Sheehan of Westfield set a course record of 15:50 when he repeated his Group 4 title at the NJSAA cross-country championships yesterday at Holmdel County Park.

It was a repeat of last year. Sheehan led Westfield to its seventh group title in the last 11 years. Sheehan won from Pat Busby of Morristown by 100 yards as he

Boys' X-country

took eight seconds off the course record he had set earlier this fall at the Shore Coaches Invitational. Westfield easily defeated Morristown, 75-12.

Christian Brothers continued on its road to an undefeated season when it ran away with the Parochial A race, 38-10; over Morris Catholic. CBA runners took four of the first six places in the race behind Greg Noll of Morris Catholic, who defended his individual title in 16:04.

The other team winners, none of them surprises, were Toms River South in Group 3, Haddonfield in Group 2, defending champion Bernards in Group 1 and Bishop Eustace in Parochial B. It was Bernards' 13th group title in 16 years under coach Ed Malber.

CBA left one regular, Tim Sheehan, on the sidelines nursing an ailing leg and still turned in the best team performance of the six races. John McCabe led the team in second at 16:18. Ken McLeod was third at 16:23, sophomore Paul Marabito fourth at 16:31 and Ed Hillman sixth at 16:36.

Bernards, with a team composed entirely of sophomores and juniors, gave its best state meet performance in a 31-128 rout of Montgomery. Brian Hankam of Montgomery won the race in 16:25, but then it was Bernards' juniors John Grozier and Roy Farrell, second and third in 16:33 and 16:38, and sophs Paul Storgyn and Mike Himman, fifth and sixth, behind Wally Kennedy of Keyport in 16:42 and 16:45.

Haddonfield also had no trouble taking its second Group 2 title in three years, 72-143, over Springfield. Tom Patrick of Princeton won the race in a close duel with Dave Hall of West Windsor in 16:47. Steve Maslowski led Haddonfield in fifth place at 16:56 and sophomore Blair Murphy was seventh in 16:58.

Toms River South won its first state title, 113-147, margin over Parsippany. Tom Fischer of Manalapan, like Sheehan undefeated this fall, won the race in 15:59 from the Oakcrest twins, Don and Ron Decker. Ray Kiburg led Toms River South in 16th place and Dave Marcoux was 21st.

The Parochial B race, which led off the 10-event program, also had a first-time winner in Bishop Eustace of Pennsylvania. Bishop Eustace spoiled Mater Del's bid for a boy-girl double, 66-74. Bob DeFeyna of Oratory was first over the line in 17:10 and Mark Rabon led Bishop Eustace in ninth at 17:52.

GROUP 1
TEAM SCORES: 1. Bernards 122, 2. Bernards 118, 3. Haddonfield 72, 4. Springfield 70, 5. Princeton 68, 6. West Windsor 67, 7. Toms River South 66, 8. Toms River South 65, 9. Toms River South 64, 10. Toms River South 63, 11. Toms River South 62, 12. Toms River South 61, 13. Toms River South 60, 14. Toms River South 59, 15. Toms River South 58, 16. Toms River South 57, 17. Toms River South 56, 18. Toms River South 55, 19. Toms River South 54, 20. Toms River South 53, 21. Toms River South 52, 22. Toms River South 51, 23. Toms River South 50, 24. Toms River South 49, 25. Toms River South 48, 26. Toms River South 47, 27. Toms River South 46, 28. Toms River South 45, 29. Toms River South 44, 30. Toms River South 43, 31. Toms River South 42, 32. Toms River South 41, 33. Toms River South 40, 34. Toms River South 39, 35. Toms River South 38, 36. Toms River South 37, 37. Toms River South 36, 38. Toms River South 35, 39. Toms River South 34, 40. Toms River South 33, 41. Toms River South 32, 42. Toms River South 31, 43. Toms River South 30, 44. Toms River South 29, 45. Toms River South 28, 46. Toms River South 27, 47. Toms River South 26, 48. Toms River South 25, 49. Toms River South 24, 50. Toms River South 23, 51. Toms River South 22, 52. Toms River South 21, 53. Toms River South 20, 54. Toms River South 19, 55. Toms River South 18, 56. Toms River South 17, 57. Toms River South 16, 58. Toms River South 15, 59. Toms River South 14, 60. Toms River South 13, 61. Toms River South 12, 62. Toms River South 11, 63. Toms River South 10, 64. Toms River South 9, 65. Toms River South 8, 66. Toms River South 7, 67. Toms River South 6, 68. Toms River South 5, 69. Toms River South 4, 70. Toms River South 3, 71. Toms River South 2, 72. Toms River South 1.

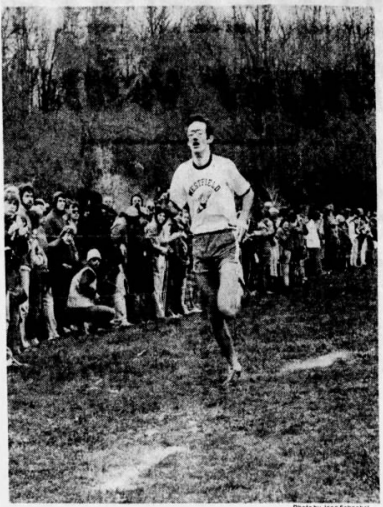
GROUP 2
TEAM SCORES: 1. Haddonfield 72, 2. Springfield 70, 3. Princeton 68, 4. West Windsor 67, 5. Toms River South 66, 6. Toms River South 65, 7. Toms River South 64, 8. Toms River South 63, 9. Toms River South 62, 10. Toms River South 61, 11. Toms River South 60, 12. Toms River South 59, 13. Toms River South 58, 14. Toms River South 57, 15. Toms River South 56, 16. Toms River South 55, 17. Toms River South 54, 18. Toms River South 53, 19. Toms River South 52, 20. Toms River South 51, 21. Toms River South 50, 22. Toms River South 49, 23. Toms River South 48, 24. Toms River South 47, 25. Toms River South 46, 26. Toms River South 45, 27. Toms River South 44, 28. Toms River South 43, 29. Toms River South 42, 30. Toms River South 41, 31. Toms River South 40, 32. Toms River South 39, 33. Toms River South 38, 34. Toms River South 37, 35. Toms River South 36, 36. Toms River South 35, 37. Toms River South 34, 38. Toms River South 33, 39. Toms River South 32, 40. Toms River South 31, 41. Toms River South 30, 42. Toms River South 29, 43. Toms River South 28, 44. Toms River South 27, 45. Toms River South 26, 46. Toms River South 25, 47. Toms River South 24, 48. Toms River South 23, 49. Toms River South 22, 50. Toms River South 21, 51. Toms River South 20, 52. Toms River South 19, 53. Toms River South 18, 54. Toms River South 17, 55. Toms River South 16, 56. Toms River South 15, 57. Toms River South 14, 58. Toms River South 13, 59. Toms River South 12, 60. Toms River South 11, 61. Toms River South 10, 62. Toms River South 9, 63. Toms River South 8, 64. Toms River South 7, 65. Toms River South 6, 66. Toms River South 5, 67. Toms River South 4, 68. Toms River South 3, 69. Toms River South 2, 70. Toms River South 1.

GROUP 3
TEAM SCORES: 1. Toms River South 66, 2. Toms River South 65, 3. Toms River South 64, 4. Toms River South 63, 5. Toms River South 62, 6. Toms River South 61, 7. Toms River South 60, 8. Toms River South 59, 9. Toms River South 58, 10. Toms River South 57, 11. Toms River South 56, 12. Toms River South 55, 13. Toms River South 54, 14. Toms River South 53, 15. Toms River South 52, 16. Toms River South 51, 17. Toms River South 50, 18. Toms River South 49, 19. Toms River South 48, 20. Toms River South 47, 21. Toms River South 46, 22. Toms River South 45, 23. Toms River South 44, 24. Toms River South 43, 25. Toms River South 42, 26. Toms River South 41, 27. Toms River South 40, 28. Toms River South 39, 29. Toms River South 38, 30. Toms River South 37, 31. Toms River South 36, 32. Toms River South 35, 33. Toms River South 34, 34. Toms River South 33, 35. Toms River South 32, 36. Toms River South 31, 37. Toms River South 30, 38. Toms River South 29, 39. Toms River South 28, 40. Toms River South 27, 41. Toms River South 26, 42. Toms River South 25, 43. Toms River South 24, 44. Toms River South 23, 45. Toms River South 22, 46. Toms River South 21, 47. Toms River South 20, 48. Toms River South 19, 49. Toms River South 18, 50. Toms River South 17, 51. Toms River South 16, 52. Toms River South 15, 53. Toms River South 14, 54. Toms River South 13, 55. Toms River South 12, 56. Toms River South 11, 57. Toms River South 10, 58. Toms River South 9, 59. Toms River South 8, 60. Toms River South 7, 61. Toms River South 6, 62. Toms River South 5, 63. Toms River South 4, 64. Toms River South 3, 65. Toms River South 2, 66. Toms River South 1.

GROUP 4
TEAM SCORES: 1. Westfield 155, 2. Westfield 150, 3. Westfield 145, 4. Westfield 140, 5. Westfield 135, 6. Westfield 130, 7. Westfield 125, 8. Westfield 120, 9. Westfield 115, 10. Westfield 110, 11. Westfield 105, 12. Westfield 100, 13. Westfield 95, 14. Westfield 90, 15. Westfield 85, 16. Westfield 80, 17. Westfield 75, 18. Westfield 70, 19. Westfield 65, 20. Westfield 60, 21. Westfield 55, 22. Westfield 50, 23. Westfield 45, 24. Westfield 40, 25. Westfield 35, 26. Westfield 30, 27. Westfield 25, 28. Westfield 20, 29. Westfield 15, 30. Westfield 10, 31. Westfield 5, 32. Westfield 0.

PAROCHIAL
TEAM SCORES: 1. Christian Brothers 38, 2. Morris Cath.

106. 1. Bergen Catholic 112, 2. St. Ann's Catholic 102, 3. St. Ann's Catholic 101, 4. St. Ann's Catholic 100, 5. St. Ann's Catholic 99, 6. St. Ann's Catholic 98, 7. St. Ann's Catholic 97, 8. St. Ann's Catholic 96, 9. St. Ann's Catholic 95, 10. St. Ann's Catholic 94, 11. St. Ann's Catholic 93, 12. St. Ann's Catholic 92, 13. St. Ann's Catholic 91, 14. St. Ann's Catholic 90, 15. St. Ann's Catholic 89, 16. St. Ann's Catholic 88, 17. St. Ann's Catholic 87, 18. St. Ann's Catholic 86, 19. St. Ann's Catholic 85, 20. St. Ann's Catholic 84, 21. St. Ann's Catholic 83, 22. St. Ann's Catholic 82, 23. St. Ann's Catholic 81, 24. St. Ann's Catholic 80, 25. St. Ann's Catholic 79, 26. St. Ann's Catholic 78, 27. St. Ann's Catholic 77, 28. St. Ann's Catholic 76, 29. St. Ann's Catholic 75, 30. St. Ann's Catholic 74, 31. St. Ann's Catholic 73, 32. St. Ann's Catholic 72, 33. St. Ann's Catholic 71, 34. St. Ann's Catholic 70, 35. St. Ann's Catholic 69, 36. St. Ann's Catholic 68, 37. St. Ann's Catholic 67, 38. St. Ann's Catholic 66, 39. St. Ann's Catholic 65, 40. St. Ann's Catholic 64, 41. St. Ann's Catholic 63, 42. St. Ann's Catholic 62, 43. St. Ann's Catholic 61, 44. St. Ann's Catholic 60, 45. St. Ann's Catholic 59, 46. St. Ann's Catholic 58, 47. St. Ann's Catholic 57, 48. St. Ann's Catholic 56, 49. St. Ann's Catholic 55, 50. St. Ann's Catholic 54, 51. St. Ann's Catholic 53, 52. St. Ann's Catholic 52, 53. St. Ann's Catholic 51, 54. St. Ann's Catholic 50, 55. St. Ann's Catholic 49, 56. St. Ann's Catholic 48, 57. St. Ann's Catholic 47, 58. St. Ann's Catholic 46, 59. St. Ann's Catholic 45, 60. St. Ann's Catholic 44, 61. St. Ann's Catholic 43, 62. St. Ann's Catholic 42, 63. St. Ann's Catholic 41, 64. St. Ann's Catholic 40, 65. St. Ann's Catholic 39, 66. St. Ann's Catholic 38, 67. St. Ann's Catholic 37, 68. St. Ann's Catholic 36, 69. St. Ann's Catholic 35, 70. St. Ann's Catholic 34, 71. St. Ann's Catholic 33, 72. St. Ann's Catholic 32, 73. St. Ann's Catholic 31, 74. St. Ann's Catholic 30, 75. St. Ann's Catholic 29, 76. St. Ann's Catholic 28, 77. St. Ann's Catholic 27, 78. St. Ann's Catholic 26, 79. St. Ann's Catholic 25, 80. St. Ann's Catholic 24, 81. St. Ann's Catholic 23, 82. St. Ann's Catholic 22, 83. St. Ann's Catholic 21, 84. St. Ann's Catholic 20, 85. St. Ann's Catholic 19, 86. St. Ann's Catholic 18, 87. St. Ann's Catholic 17, 88. St. Ann's Catholic 16, 89. St. Ann's Catholic 15, 90. St. Ann's Catholic 14, 91. St. Ann's Catholic 13, 92. St. Ann's Catholic 12, 93. St. Ann's Catholic 11, 94. St. Ann's Catholic 10, 95. St. Ann's Catholic 9, 96. St. Ann's Catholic 8, 97. St. Ann's Catholic 7, 98. St. Ann's Catholic 6, 99. St. Ann's Catholic 5, 100. St. Ann's Catholic 4, 101. St. Ann's Catholic 3, 102. St. Ann's Catholic 2, 103. St. Ann's Catholic 1, 104. St. Ann's Catholic 0.



Westfield's Cliff Sheehan is en route to a course record effort in retaining his Group 4 boys title and helping his school do the same

SUMMIT STAR WINS IN 18:58

Gschwind Group 3 titlist

By GRANT EDWARDS

North Hunterdon and Ridgewood cleared the way for a classic duel for the NJSAA girls all-group cross-country title when they scored easy victories in their respective group races yesterday at Holmdel County Park.

North Hunterdon, the state's No. 1 ranked team, had all five of its girls run under 20:00 as it won the Group 1, 27-

Girls' X-country

140, from Randolph Ridgewood put its first four runners under that time when it defeated defending-champion Hunterdon Central in Group 4, 35-113.

The other two team races were much closer. Mater Del ended a three-year string of state titles for Bernards, 45-66, in Group 1 and Whippany Park took its first group championship, 75-76, over defender St. John Vianney in Group 2.

There were no surprises in the individual races. Freshman Janet Smith of North Edison won in Group 4 in 18:56. Theresa Gschwind of Summit ran away with the Group 3 title in 18:58. Lisa Pakuka of Hopatcong defended her Group 2 crown in 18:56 and Meg Waldron of Bernards had the day's fastest time in Group 1 - 18:48. None of the races were close.

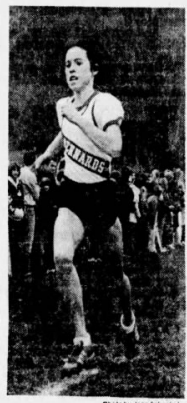
North Hunterdon took five of the first 13 places in the Group 3 race, led by Sharon Green and Tracey Bigley in third and fourth positions. Let Ludwig finished ninth, freshman Stacy Bilotta 10th, and Kim Borin 13th. For insurance, coach Bob McConvey had Marge DeMarrais in 20th position.

Ridgewood was only slightly less impressive in Group 4. Ellen Mileksi led in third place in 19:24 with twin Patty seventh in 19:41. Carol Dickson, Kathy Duffy and Sue Hart finished 11th, 12th and 14th, respectively.

Sue Minogue and Maria Miele led the Mater Del victory, placing second and third behind Waldron in 19:04 and 19:30. Sue Ashmore, Kathy McAuliffe and Joanne Gannon were also in the first 20 as Mater Del finished with 45 points to 66 for Kingwood and 77 for Bernards.

Roxanne Polo led the Whippany Park victory in third place at 19:36, with teammates Stacey Aramando and Linda D'Addario taking seventh and 18th. Last week, Whippany Park, minus Aramando, set the North Jersey Section 2 race to Mount Olive, which placed third yesterday.

With the times of the four winners only 10 seconds apart, a clear favorite emerged for Saturday's all-group race. Waldron had the closest margin of victory yesterday, a comfortable 16 seconds over Minogue.



Meg Waldron of Bernards is on her way to first place in the girls Group 1 race yesterday. Waldron's 18:48 effort was the fastest of the four girls' races

136. 1. Kelly Tolan, Williamstown, 18:57. 2. Fran Couplin, 18:58. 3. Amy Kays, Tarrytown, 18:59. 4. Nancy Anagnostis, Whippany Park, 19:00. 5. Elizabeth Galt, Mount Olive, 19:01. 6. Kelly Tolan, Williamstown, 19:02. 7. Nancy Anagnostis, Whippany Park, 19:03. 8. Elizabeth Galt, Mount Olive, 19:04. 9. Kelly Tolan, Williamstown, 19:05. 10. Nancy Anagnostis, Whippany Park, 19:06. 11. Elizabeth Galt, Mount Olive, 19:07. 12. Kelly Tolan, Williamstown, 19:08. 13. Nancy Anagnostis, Whippany Park, 19:09. 14. Elizabeth Galt, Mount Olive, 19:10. 15. Kelly Tolan, Williamstown, 19:11. 16. Nancy Anagnostis, Whippany Park, 19:12. 17. Elizabeth Galt, Mount Olive, 19:13. 18. Kelly Tolan, Williamstown, 19:14. 19. Nancy Anagnostis, Whippany Park, 19:15. 20. Elizabeth Galt, Mount Olive, 19:16. 21. Kelly Tolan, Williamstown, 19:17. 22. Nancy Anagnostis, Whippany Park, 19:18. 23. Elizabeth Galt, Mount Olive, 19:19. 24. Kelly Tolan, Williamstown, 19:20. 25. Nancy Anagnostis, Whippany Park, 19:21. 26. Elizabeth Galt, Mount Olive, 19:22. 27. Kelly Tolan, Williamstown, 19:23. 28. Nancy Anagnostis, Whippany Park, 19:24. 29. Elizabeth Galt, Mount Olive, 19:25. 30. Kelly Tolan, Williamstown, 19:26. 31. Nancy Anagnostis, Whippany Park, 19:27. 32. Elizabeth Galt, Mount Olive, 19:28. 33. Kelly Tolan, Williamstown, 19:29. 34. Nancy Anagnostis, Whippany Park, 19:30. 35. Elizabeth Galt, Mount Olive, 19:31. 36. Kelly Tolan, Williamstown, 19:32. 37. Nancy Anagnostis, Whippany Park, 19:33. 38. Elizabeth Galt, Mount Olive, 19:34. 39. Kelly Tolan, Williamstown, 19:35. 40. Nancy Anagnostis, Whippany Park, 19:36. 41. Elizabeth Galt, Mount Olive, 19:37. 42. Kelly Tolan, Williamstown, 19:38. 43. Nancy Anagnostis, Whippany Park, 19:39. 44. Elizabeth Galt, Mount Olive, 19:40. 45. Kelly Tolan, Williamstown, 19:41. 46. Nancy Anagnostis, Whippany Park, 19:42. 47. Elizabeth Galt, Mount Olive, 19:43. 48. Kelly Tolan, Williamstown, 19:44. 49. Nancy Anagnostis, Whippany Park, 19:45. 50. Elizabeth Galt, Mount Olive, 19:46. 51. Kelly Tolan, Williamstown, 19:47. 52. Nancy Anagnostis, Whippany Park, 19:48. 53. Elizabeth Galt, Mount Olive, 19:49. 54. Kelly Tolan, Williamstown, 19:50. 55. Nancy Anagnostis, Whippany Park, 19:51. 56. Elizabeth Galt, Mount Olive, 19:52. 57. Kelly Tolan, Williamstown, 19:53. 58. Nancy Anagnostis, Whippany Park, 19:54. 59. Elizabeth Galt, Mount Olive, 19:55. 60. Kelly Tolan, Williamstown, 19:56. 61. Nancy Anagnostis, Whippany Park, 19:57. 62. Elizabeth Galt, Mount Olive, 19:58. 63. Kelly Tolan, Williamstown, 19:59. 64. Nancy Anagnostis, Whippany Park, 20:00. 65. Elizabeth Galt, Mount Olive, 20:01. 66. Kelly Tolan, Williamstown, 20:02. 67. Nancy Anagnostis, Whippany Park, 20:03. 68. Elizabeth Galt, Mount Olive, 20:04. 69. Kelly Tolan, Williamstown, 20:05. 70. Nancy Anagnostis, Whippany Park, 20:06. 71. Elizabeth Galt, Mount Olive, 20:07. 72. Kelly Tolan, Williamstown, 20:08. 73. Nancy Anagnostis, Whippany Park, 20:09. 74. Elizabeth Galt, Mount Olive, 20:10. 75. Kelly Tolan, Williamstown, 20:11. 76. Nancy Anagnostis, Whippany Park, 20:12. 77. Elizabeth Galt, Mount Olive, 20:13. 78. Kelly Tolan, Williamstown, 20:14. 79. Nancy Anagnostis, Whippany Park, 20:15. 80. Elizabeth Galt, Mount Olive, 20:16. 81. Kelly Tolan, Williamstown, 20:17. 82. Nancy Anagnostis, Whippany Park, 20:18. 83. Elizabeth Galt, Mount Olive, 20:19. 84. Kelly Tolan, Williamstown, 20:20. 85. Nancy Anagnostis, Whippany Park, 20:21. 86. Elizabeth Galt, Mount Olive, 20:22. 87. Kelly Tolan, Williamstown, 20:23. 88. Nancy Anagnostis, Whippany Park, 20:24. 89. Elizabeth Galt, Mount Olive, 20:25. 90. Kelly Tolan, Williamstown, 20:26. 91. Nancy Anagnostis, Whippany Park, 20:27. 92. Elizabeth Galt, Mount Olive, 20:28. 93. Kelly Tolan, Williamstown, 20:29. 94. Nancy Anagnostis, Whippany Park, 20:30. 95. Elizabeth Galt, Mount Olive, 20:31. 96. Kelly Tolan, Williamstown, 20:32. 97. Nancy Anagnostis, Whippany Park, 20:33. 98. Elizabeth Galt, Mount Olive, 20:34. 99. Kelly Tolan, Williamstown, 20:35. 100. Nancy Anagnostis, Whippany Park, 20:36. 101. Elizabeth Galt, Mount Olive, 20:37. 102. Kelly Tolan, Williamstown, 20:38. 103. Nancy Anagnostis, Whippany Park, 20:39. 104. Elizabeth Galt, Mount Olive, 20:40. 105. Kelly Tolan, Williamstown, 20:41. 106. Nancy Anagnostis, Whippany Park, 20:42. 107. Elizabeth Galt, Mount Olive, 20:43. 108. Kelly Tolan, Williamstown, 20:44. 109. Nancy Anagnostis, Whippany Park, 20:45. 110. Elizabeth Galt, Mount Olive, 20:46. 111. Kelly Tolan, Williamstown, 20:47. 112. Nancy Anagnostis, Whippany Park, 20:48. 113. Elizabeth Galt, Mount Olive, 20:49. 114. Kelly Tolan, Williamstown, 20:50. 115. Nancy Anagnostis, Whippany Park, 20:51. 116. Elizabeth Galt, Mount Olive, 20:52. 117. Kelly Tolan, Williamstown, 20:53. 118. Nancy Anagnostis, Whippany Park, 20:54. 119. Elizabeth Galt, Mount Olive, 20:55. 120. Kelly Tolan, Williamstown, 20:56. 121. Nancy Anagnostis, Whippany Park, 20:57. 122. Elizabeth Galt, Mount Olive, 20:58. 123. Kelly Tolan, Williamstown, 20:59. 124. Nancy Anagnostis, Whippany Park, 21:00. 125. Elizabeth Galt, Mount Olive, 21:01. 126. Kelly Tolan, Williamstown, 21:02. 127. Nancy Anagnostis, Whippany Park, 21:03. 128. Elizabeth Galt, Mount Olive, 21:04. 129. Kelly Tolan, Williamstown, 21:05. 130. Nancy Anagnostis, Whippany Park, 21:06. 131. Elizabeth Galt, Mount Olive, 21:07. 132. Kelly Tolan, Williamstown, 21:08. 133. Nancy Anagnostis, Whippany Park, 21:09. 134. Elizabeth Galt, Mount Olive, 21:10. 135. Kelly Tolan, Williamstown, 21:11. 136. Nancy Anagnostis, Whippany Park, 21:12. 137. Elizabeth Galt, Mount Olive, 21:13. 138. Kelly Tolan, Williamstown, 21:14. 139. Nancy Anagnostis, Whippany Park, 21:15. 140. Elizabeth Galt, Mount Olive, 21:16. 141. Kelly Tolan, Williamstown, 21:17. 142. Nancy Anagnostis, Whippany Park, 21:18. 143. Elizabeth Galt, Mount Olive, 21:19. 144. Kelly Tolan, Williamstown, 21:20. 145. Nancy Anagnostis, Whippany Park, 21:21. 146. Elizabeth Galt, Mount Olive, 21:22. 147. Kelly Tolan, Williamstown, 21:23. 148. Nancy Anagnostis, Whippany Park, 21:24. 149. Elizabeth Galt, Mount Olive, 21:25. 150. Kelly Tolan, Williamstown, 21:26. 151. Nancy Anagnostis, Whippany Park, 21:27. 152. Elizabeth Galt, Mount Olive, 21:28. 153. Kelly Tolan, Williamstown, 21:29. 154. Nancy Anagnostis, Whippany Park, 21:30. 155. Elizabeth Galt, Mount Olive, 21:31. 156. Kelly Tolan, Williamstown, 21:32. 157. Nancy Anagnostis, Whippany Park, 21:33. 158. Elizabeth Galt, Mount Olive, 21:34. 159. Kelly Tolan, Williamstown, 21:35. 160. Nancy Anagnostis, Whippany Park, 21:36. 161. Elizabeth Galt, Mount Olive, 21:37. 162. Kelly Tolan, Williamstown, 21:38. 163. Nancy Anagnostis, Whippany Park, 21:39. 164. Elizabeth Galt, Mount Olive, 21:40. 165. Kelly Tolan, Williamstown, 21:41. 166. Nancy Anagnostis, Whippany Park, 21:42. 167. Elizabeth Galt, Mount Olive, 21:43. 168. Kelly Tolan, Williamstown, 21:44. 169. Nancy Anagnostis, Whippany Park, 21:45. 170. Elizabeth Galt, Mount Olive, 21:46. 171. Kelly Tolan, Williamstown, 21:47. 172. Nancy Anagnostis, Whippany Park, 21:48. 173. Elizabeth Galt, Mount Olive, 21:49. 174. Kelly Tolan, Williamstown, 21:50. 175. Nancy Anagnostis, Whippany Park, 21:51. 176. Elizabeth Galt, Mount Olive, 21:52. 177. Kelly Tolan, Williamstown, 21:53. 178. Nancy Anagnostis, Whippany Park, 21:54. 179. Elizabeth Galt, Mount Olive, 21:55. 180. Kelly Tolan, Williamstown, 21:56. 181. Nancy Anagnostis, Whippany Park, 21:57. 182. Elizabeth Galt, Mount Olive, 21:58. 183. Kelly Tolan, Williamstown, 21:59. 184. Nancy Anagnostis, Whippany Park, 22:00. 185. Elizabeth Galt, Mount Olive, 22:01. 186. Kelly Tolan, Williamstown, 22:02. 187. Nancy Anagnostis, Whippany Park, 22:03. 188. Elizabeth Galt, Mount Olive, 22:04. 189. Kelly Tolan, Williamstown, 22:05. 190. Nancy Anagnostis, Whippany Park, 22:06. 191. Elizabeth Galt, Mount Olive, 22:07. 192. Kelly Tolan, Williamstown, 22:08. 193. Nancy Anagnostis, Whippany Park, 22:09. 194. Elizabeth Galt, Mount Olive, 22:10. 195. Kelly Tolan, Williamstown, 22:11. 196. Nancy Anagnostis, Whippany Park, 22:12. 197. Elizabeth Galt, Mount Olive, 22:13. 198. Kelly Tolan, Williamstown, 22:14. 199. Nancy Anagnostis, Whippany Park, 22:15. 200. Elizabeth Galt, Mount Olive, 22:16. 201. Kelly Tolan, Williamstown, 22:17. 202. Nancy Anagnostis, Whippany Park, 22:18. 203. Elizabeth Galt, Mount Olive, 22:19. 204. Kelly Tolan, Williamstown, 22:20. 205. Nancy Anagnostis, Whippany Park, 22:21. 206. Elizabeth Galt, Mount Olive, 22:22. 207. Kelly Tolan, Williamstown, 22:23. 208. Nancy Anagnostis, Whippany Park, 22:24. 209. Elizabeth Galt, Mount Olive, 22:25. 210. Kelly Tolan, Williamstown, 22:26. 211. Nancy Anagnostis, Whippany Park, 22:27. 212. Elizabeth Galt, Mount Olive, 22:28. 213. Kelly Tolan, Williamstown, 22:29. 214. Nancy Anagnostis, Whippany Park, 22:30. 215. Elizabeth Galt, Mount Olive, 22:31. 216. Kelly Tolan, Williamstown, 22:32. 217. Nancy Anagnostis, Whippany Park, 22:33. 218. Elizabeth Galt, Mount Olive, 22:34. 219. Kelly Tolan, Williamstown, 22:35. 220. Nancy Anagnostis, Whippany Park, 22:36. 221. Elizabeth Galt, Mount Olive, 22:37. 222. Kelly Tolan, Williamstown, 22:38. 223. Nancy Anagnostis, Whippany Park, 22:39. 224. Elizabeth Galt, Mount Olive, 22:40. 225. Kelly Tolan, Williamstown, 22:41. 226. Nancy Anagnostis, Whippany Park, 22:42. 227. Elizabeth Galt, Mount Olive, 22:43. 228. Kelly Tolan, Williamstown, 22:44. 229. Nancy Anagnostis, Whippany Park, 22:45. 230. Elizabeth Galt, Mount Olive, 22:46. 231. Kelly Tolan, Williamstown, 22:47. 232. Nancy Anagnostis, Whippany Park, 22:48. 233. Elizabeth Galt, Mount Olive, 22:49. 234. Kelly Tolan, Williamstown, 22:50. 235. Nancy Anagnostis, Whippany Park, 22:51. 236. Elizabeth Galt, Mount Olive, 22:52. 237. Kelly Tolan, Williamstown, 22:53. 238. Nancy Anagnostis, Whippany Park, 22:54. 239. Elizabeth Galt, Mount Olive, 22:55. 240. Kelly Tolan, Williamstown, 22:56. 241. Nancy Anagnostis, Whippany Park, 22:57. 242. Elizabeth Galt, Mount Olive, 22:58. 243. Kelly Tolan, Williamstown, 22:59. 244. Nancy Anagnostis, Whippany Park, 23:00. 245. Elizabeth Galt, Mount Olive, 23:01. 246. Kelly Tolan, Williamstown, 23:02. 247. Nancy Anagnostis, Whippany Park, 23:03. 248. Elizabeth Galt, Mount Olive, 23:04. 249. Kelly Tolan, Williamstown, 23:05. 250. Nancy Anagnostis, Whippany Park, 23:06. 251. Elizabeth Galt, Mount Olive, 23:07. 252. Kelly Tolan, Williamstown, 23:08. 253. Nancy Anagnostis, Whippany Park, 23:09. 254. Elizabeth Galt, Mount Olive, 23:10. 255. Kelly Tolan, Williamstown, 23:11. 256. Nancy Anagnostis, Whippany Park, 23:12. 257. Elizabeth Galt, Mount Olive, 23:13. 258. Kelly Tolan, Williamstown, 23:14. 259. Nancy Anagnostis, Whippany Park, 23:15. 260. Elizabeth Galt, Mount Olive, 23:16. 261. Kelly Tolan, Williamstown, 23:17. 262. Nancy Anagnostis, Whippany Park, 23:18. 263. Elizabeth Galt, Mount Olive, 23:19. 264. Kelly Tolan, Williamstown, 23:20. 265. Nancy Anagnostis, Whippany Park, 23:21. 266. Elizabeth Galt, Mount Olive, 23:22. 267. Kelly Tolan, Williamstown, 23:23. 268. Nancy Anagnostis, Whippany Park, 23:24. 269. Elizabeth Galt, Mount Olive, 23:25. 270. Kelly Tolan, Williamstown, 23:26. 271. Nancy Anagnostis, Whippany Park, 23:27. 272. Elizabeth Galt, Mount Olive, 23:28. 273. Kelly Tolan, Williamstown, 23:29. 274. Nancy Anagnostis, Whippany Park,